

Witney Town Council



SUMMER NEWSLETTER 2019



OUR NEW
MAYOR
CLLR DUNCAN
ENRIGHT

Find out more about Duncan on the
Mayor of Witney's Facebook page

<https://www.facebook.com/mayorofwitney/>

It is an honour to serve as Mayor for Witney this year. Thank you for voting for me, and to my fellow councillors for placing their trust in me. My role is to bring the town together and celebrate all that is great about Witney, making sure we all look after each other. I also represent our town to the outside world, along with others, including to our twin towns whose partnership we value particularly at this time of international upheaval. We would I'm sure all like Witney to be a confident, welcoming, happy market town, in the Heart of the United Kingdom and Europe, no matter what the bigger politics brings.

Mayor of Witney: East Ward (Lab) **Cllr Duncan Enright**



If you could star in the remake of a film of your choice which one would you chose and who would you play? **Tony in West Side Story**

If you had to appear on either Strictly Come Dancing or The Island with Bear Grylls?
Strictlyly obvs.

duncan.enright@witney-tc.gov.uk

Dep Mayor of Witney: East Ward (Lab) **Cllr Joy Aitman**



Would you rather live without internet or your car for a year? **Ooh a tough one. But I think it would be the car. I need Spotify & Candy Crush.**
If you could wake up tomorrow doing any other job? **Wildlife photographer. However, if I got bored at parties I used to tell people I was a dolphin trainer at Windsor Safari Park.**

joy.aitman@witney-tc.gov.uk

Leader of the Council: East Ward (Lab) **Cllr Rosa Bolger**



Can you play a musical instrument? **I played the trombone as a child and now I just sing loudly (and mostly out of tune) in my car. Sorry if you witness this at the traffic lights...**
Celebrity Crush or Dinner Party guest –living or dead. **Hugh Grant. No explanation needed. Joni Mitchell is my girl crush**

rosa.bolger@witney-tc.gov.uk

Dep Leader of the Council: Central Ward (Lab) **Cllr Luci Ashbourne**



How many chairs would be likely to turn for you on 'The Voice'?
All of em!

Would you rather live without the internet or your car for a year?
My car (good excuse to avoid the A40

luci.ashbourne@witney-tc.gov.uk

West Ward (Con) **Cllr Thomas Ashby**



Quiet night in or Big night out ? **Big Night Out - Hey? I'm young.**

If you had to appear on either Strictly Come Dancing or The Island with Bear Grylls?
The Island with Bear Grylls - as an Assistant Scout Leader, I would like to think I would have a pretty good chance of surviving.

thomas.ashby@witney-tc.gov.uk

South Ward (Lab) **Cllr Daniel Butterfield**



Is on the following committees:

Halls & Green Spaces and the Christmas sub-committee

daniel.butterfield@witney-tc.gov.uk

WHO ARE MY COUNCILLORS?

Ward information, contact email and a little fun fact or two to reveal the person behind the title of councillor and where they stand in the eternal battle of CAT OR DOG?

South Ward (Lab) **Cllr Owen Collins**



If you could star in the remake of a film of your choice which one would you chose and who would you play? **Woody in This Is England, or failing that, Woody in Toy Story.**

What's your karaoke song?
Sit Down by James (Mo Salah version...)

owen.collins@witney-tc.gov.uk

Central Ward (Lab) **Cllr Liz Duncan**



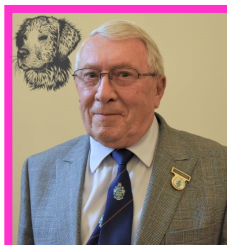
Something on your bucket list.

The Northern Lights

Can you play a musical instrument? **I play the piano accordion and I'm a member of the Township Waits group. Look out for us at the Xmas lights switch-on and around the pubs at Christmas!**

liz.duncan@witney-tc.gov.uk

West Ward (Con) **Cllr Harry Eaglestone**



Fancy dress- the theme is anything beginning with your first name initial letter – what are you dressing as?
Hamlet

If you could wake up tomorrow doing any other job? **Yachtsman.**

harry.eaglestone@witney-tc.gov.uk

East Ward Councillor (Lab) **Cllr Vicky Gwatkin**



Celebrity Crush or Dinner Party guest –living or dead. **A young Marlon Brando – best looking man ever – not interested in the conversation.**

Fancy dress- the theme is anything beginning with your first name initial letter – what are you dressing as? **A Valkyrie**

vicky.gwatkin@witney-tc.gov.uk

Burwell Ward Councillor (Con) **Cllr David Harvey**



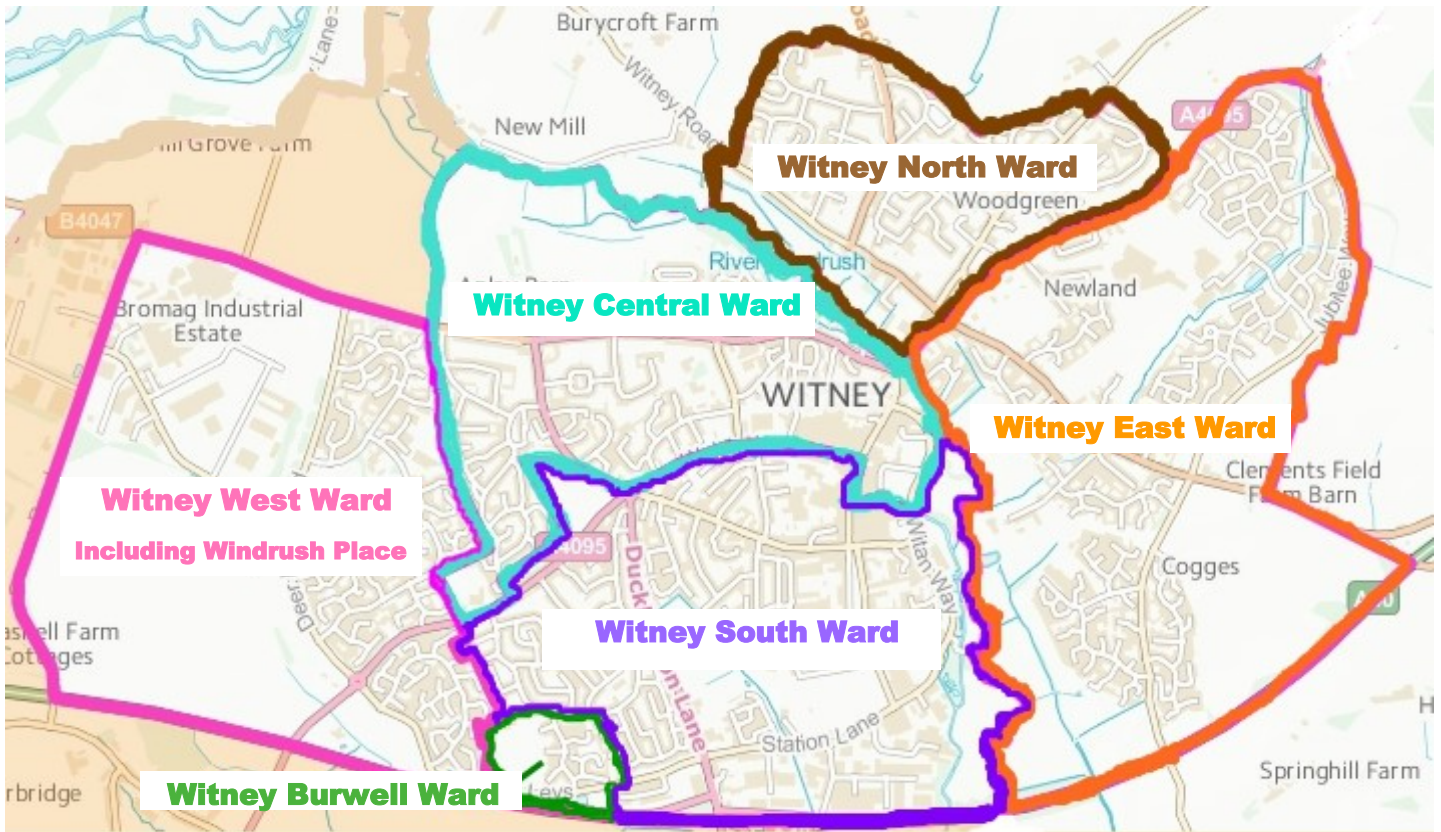
If you could star in the remake of a film of your choice which one would you chose and who would you play?

Lovejoy in Lovejoy the Movie.

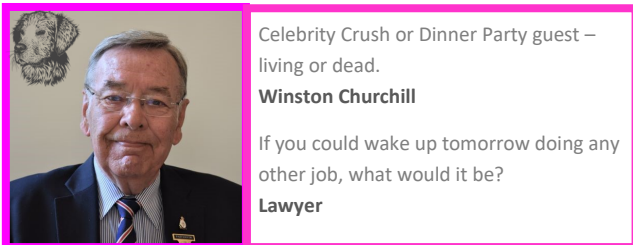
What's your karaoke song?
Zadok the Priest

david.harvey@witney-tc.gov.uk

WITNEY WARD MAP

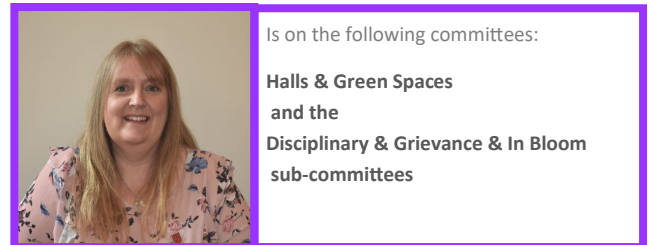


West Ward: (Con) **Cllr Jim King**



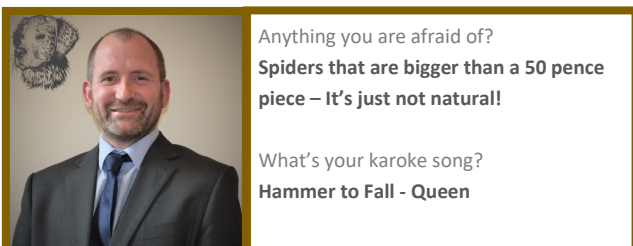
jim.king@witney-tc.gov.uk

South Ward (Lab) **Cllr Mel Jones**



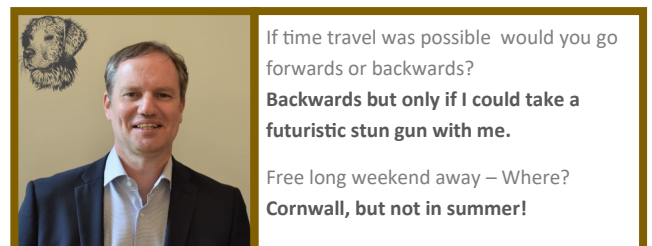
mel.jones@witney-tc.gov.uk

North Ward (Con) **Cllr Andy McMahon**



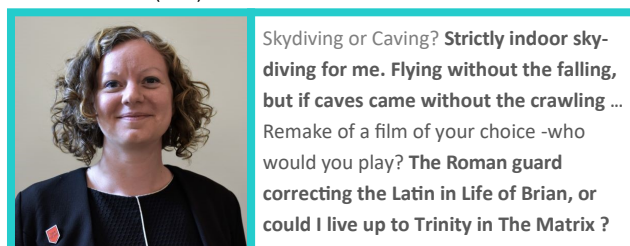
andy.mcmahon@witney-tc.gov.uk

North Ward (Green) **Cllr Andrew Prosser**



andrew.prosser@witney-tc.gov.uk

Central Ward (Lab) **Cllr Ruth Smith**



ruth.smith@witney-tc.gov.uk

Events



Follow Witney Public Halls on Facebook

<https://www.facebook.com/publichallswitney/>

for information on all our events.

You can hire the Corn Exchange and Burwell Hall for your own events too. If you want to find out more you can drop in to the Corn Exchange and speak to our friendly Public Halls team or call them on 01993 702309 or send an email in to publichalls@witney-tc.gov.uk



THE CORN EXCHANGE

A Heritage Wedding Venue

We are delighted to announce that the Corn Exchange is now a licensed wedding venue. You can hold your marriage ceremony in the Gallery Room or Main Hall with prices starting from £230 for 2 hours. (Registrar and arrangement fees not included).

For more details call the Public Halls team on 01993 702309

We asked you to rate Witney Town Council Services in this year's **Resident's Satisfaction Survey** which was delivered to all households as a newsletter and made available online. We had 343 responses of which 238 were postal with 105 online. This may reflect the preferences of the majority of the age group responding. Over half were 60 or over with only 4% coming from the under 30 age group.

A word cloud shaped like a map of the Burwell area. The words are arranged to follow the geographical outline of the region. The most prominent words, shown in larger fonts, include 'Burwell', 'Park', 'Town', 'Street', 'Bench', 'Grass', 'Weeds', 'Rubbish', 'Potholes', 'Replaced', 'Community', 'Infrastructure', 'Facilities', 'Cemetery', 'Bus Shelters', 'Events', 'Cleaning', 'Roads', 'Twitter', 'Facebook', 'Newsletter', 'Furniture', 'Benches', 'Cutting', 'Exchange', 'Corn', 'Bins', 'Garden', 'Centre', 'Streets', 'Pavement', 'Litter', 'Sports', 'Infrastructure', 'Communication', 'Burwell', 'Park', 'Town', 'Street', 'Bench', 'Grass', 'Weeds', 'Rubbish', 'Potholes', 'Replaced', 'Community', 'Infrastructure', 'Facilities', 'Cemetery', 'Bus Shelters', 'Events', 'Cleaning', 'Roads', 'Twitter', 'Facebook', 'Newsletter', 'Furniture', 'Benches', 'Cutting', 'Exchange', 'Corn', 'Bins', 'Garden', 'Centre', 'Streets', 'Pavement', 'Litter', 'Sports', 'Infrastructure', 'Communication'. Other smaller words visible include 'Burwell', 'Park', 'Town', 'Street', 'Bench', 'Grass', 'Weeds', 'Rubbish', 'Potholes', 'Replaced', 'Community', 'Infrastructure', 'Facilities', 'Cemetery', 'Bus Shelters', 'Events', 'Cleaning', 'Roads', 'Twitter', 'Facebook', 'Newsletter', 'Furniture', 'Benches', 'Cutting', 'Exchange', 'Corn', 'Bins', 'Garden', 'Centre', 'Streets', 'Pavement', 'Litter', 'Sports', 'Infrastructure', 'Communication', 'Burwell', 'Park', 'Town', 'Street', 'Bench', 'Grass', 'Weeds', 'Rubbish', 'Potholes', 'Replaced', 'Community', 'Infrastructure', 'Facilities', 'Cemetery', 'Bus Shelters', 'Events', 'Cleaning', 'Roads', 'Twitter', 'Facebook', 'Newsletter', 'Furniture', 'Benches', 'Cutting', 'Exchange', 'Corn', 'Bins', 'Garden', 'Centre', 'Streets', 'Pavement', 'Litter', 'Sports', 'Infrastructure', 'Communication'.

Witney Town Council holds the view that it is important to respond where possible so this article aims to address some of the points made by you this year. We have included some useful contacts for other services on the last page.

There were lots of calls for additional bins and many people would also like to see more benches around town. Unfortunately Witney Town Council can only install benches and bins on land that it owns, unless it can obtain permission from other landowners.

Following last year's survey that focused specifically on bins and benches, the Town Council resolved to undertake a rolling programme of improvements including replacing benches in the worst condition with new ones from stock and setting aside extra budget for street furniture. This also needs to take into account long term maintenance of benches and bin emptying costs.

The siting of bins and benches is a sensitive issue and only after careful consultation with nearby residents, upon whom it is likely to have a direct impact, can an installation take place, if agreed. We are continuing to refurbish bus shelters and install community art work on several around the town. This is likely to be limited to shelters in the centre of town or where there is plenty of footfall, in an effort to discourage vandalism.

COMMUNICATION

Communication is a difficult thing to get right as there is no 'one size fits all' solution. Many of you used the internet to access & fill in the survey, but we had a larger response by Freepost to the newsletter survey issued to all households. Since 2016 the score for Communication has improved considerably year on year, with almost a quarter grading communication as poor in 2016 to just 11 percent giving a poor rating in this year's survey. Some of you asked for mass leafleting, or personal phone calls. Unfortunately, Witney is of a size where this is neither cost effective or time practical, so is reserved for the survey and precept information once a year, in the Spring newsletter. Others have requested more content about Witney Town Council in the Witney Gazette, which is cited as the most popular source of information for 56% of our respondents, but is also the one we have least influence over in terms of content & what is printed and when.

What are we doing?

While many of you had praise for the information available on our Facebook page and social media in general, we acknowledge that not everyone has access to, or is comfortable with using social media.

We continue to seek new ways of presenting news and information to you whilst maintaining the forms of communication that we know you respond to. Paper based communication is more expensive to produce & deliver than digital formats and less desirable in terms of waste and environmental impact, but the Town Council wants to offer a choice in order to reach more residents. Printed copies of our newsletter are available from the Town Hall and Corn Exchange or digitally at our website. If you are less able to get into town and don't use the internet you can always contact one of your ward councillors if you would like a copy. You are also always welcome to drop into the Town Hall & speak to us in person. We are a friendly bunch!

PROJECTS

Finally, we asked you to rank the following proposed future projects in order of priority and make suggestions about one thing that might benefit each of the projects: The Corn Exchange Phase II; The Lake & Country Park, Long Term Recreation Plans and Sports Facility Provision. Some of you felt there was a lack of information about these because at this point no precise plans have been formulated. You listed them in the following order:

- 1 Sports Facility Provision
- 2 The Lake & Country Park , Long Term Recreation plans
- 3 The Corn Exchange Phase II

Among the recommendations you made were; investment in West Witney Sports Ground, to include parking, toilets changing rooms and 4G pitches. You would like to see an athletics/cycling track . Dog poo on pitches is a problem & you suggested dog wardens and effective fines.

At the Lake and Country Park you'd like to see us concentrate on the ecology of the lake with bird hides, dogs on leads, no swimming, fishing, barbecues, or litter and with improved information boards. You also did not want to see cafes or other buildings there but would like improvements to the entrance at the subway beneath the A40.

You expressed a wish to see a stage and seating in the Corn Exchange along with a proper kitchen and cheaper hire rates. You suggested it is let to commercial businesses throughout the week to generate additional income.



The results of the survey will be used to inform policy and will help us to continue to seek to improve service delivery across all departments, so thank you to those who took part. Your feedback is very important and always welcome.

COUNCIL AND COMMITTEE MEETINGS 2019/20

PLANNING AND DEVELOPMENT	7pm	Tuesday	21 May 11 June*	2 July 23 July*	13 August 3 September 24 September*	15 October 5 November 26 November*	17 December 14 January 4 February*	18 February 10 March*	7 April 28 April
HALLS & GREEN SPACES	7pm	Monday	3 June	1 July	9 September	11 November	13 January	9 March	
STRONGER COMMUNITIES	7pm		10 June	8 July	16 September	18 November	20 January	16 March	
POLICY, GOVERNANCE & FINANCES(& Personnel sub-committee)	7pm		17 June	15 July	23 September	25 November	27 January	23 March	
COUNCIL	7pm		26 June***	29 July	7 October	9 December 16 December**	10 February	6 April	

Annual Council Meeting- Wed 6 May 2020

Annual Town Meeting- Wed 11 March 2020

NOTE: CHRISTMAS BREAK - Meetings will not be called between 17 December 2019 and 13 January 2020 unless deemed necessary

*Indicates main Planning Committee Meeting, remainder for plans

** Meeting on 16 December 2019 for budget purposes only

***Meeting day changed due to adoption of AGAR

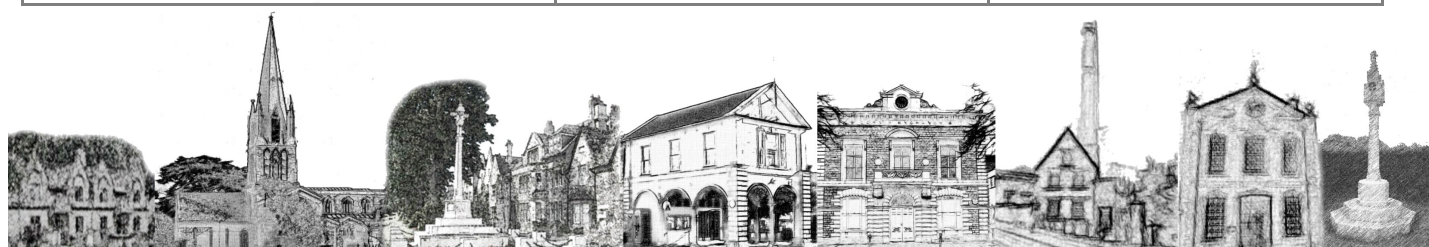


Witney Traffic Advisory Committee at 2:30pm - 4 June 2019, 24 September 2019, 14 January 2020, 17 March 2020

Witney Town Council 01993 704379 Allotments witneyallotmentassoc@gmail.com Burials Cemeteries Grants Grass Cutting (WTC Land) Lake & Country Park Play areas Street Furniture Trees (on WTC land)	West Oxfordshire District Council 01993 861000 Benefits Bins (household, recycling, dog, litter) Car Parking Dogs Elections Environmental Health Fly Tipping Grass Cutting (WODC land) Housing & Council tax Leisure Centres Licensing (street trading& taxis) Litter & Street Cleaning Market Pest Control Planning & Building Regs Public Toilets Street Naming Trees (on WODC land) Waste & Recycling	Oxfordshire County Council 01865 323000 Blue Badges Bus Passes Education (Schools) Highways Libraries Pavements Potholes Registrar Services Roadside Verges Roadworks Social Services Street Lighting
--------------------------------------------------------------------------------------------------------------------------------------------------------------------------------------------------------------------------------------------------------------------------------------------------------------	------------------------------------------------------------------------------------------------------------------------------------------------------------------------------------------------------------------------------------------------------------------------------------------------------------------------------------------------------------------------------------------------------------------------------------------------------------------------------------	------------------------------------------------------------------------------------------------------------------------------------------------------------------------------------------------------------------------------------------------------------

NEED TO REPORT SOMETHING AMISS?

Here are some phone
numbers for the services
provided in and around
Witney by different councils.



Witney Town Council. Town Hall, Market Square, Witney, Oxon, OX28 6AG 01993 704379

IF YOU NEED TO VIEW THIS NEWSLETTER IN A LARGER FONT IT IS AVAILABLE IN DIGITAL FORMAT ON OUR WEBSITE