

WHAT CAN YOU SEE?/HEAR

While you are walking around the lake keep your eyes peeled for unusual things. **You might see:**

- a bright flash of bright blue crossing the water - a **kingfisher**
- small brown birds running up a tree trunk like a mouse - these are **tree creepers**
- fish jumping
- dragonflies



When you get a little way round the lake find a quiet spot away from the water's edge and stand still and listen. **What can you hear?**

- Trees or grass rustling
- Water lapping or trickling
- Songbirds singing
- Water birds calling - gulls or ducks

Try this on a day with different weather. Do you see and hear different things on **wet days?**

WITNEY LAKE MAP



CAN YOU FIND THEM ALL?

Take a walk around the lake and try to spot all info and rubbing posts ! Don't forget to take our Interactive Wild Trail booklet and a pencil or crayon with you



WITNEY
TOWN COUNCIL



COME AND EXPLORE THE

WITNEY LAKE & COUNTRY PARK



JOKES AROUND THE LAKE

Where do fish keep
their money?

In a river bank!



What do you call a
bumble bee trying to
make up its mind?

A maybee!

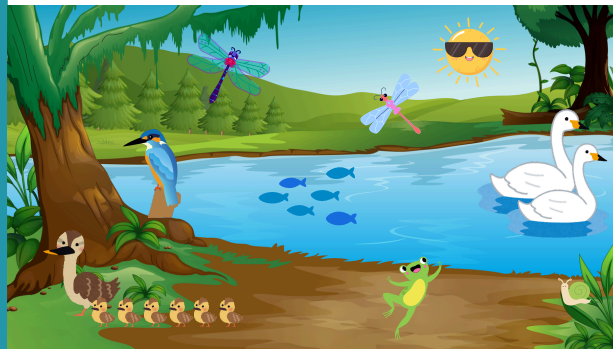


What did the tree
wear to the pool
party?

Swimming trunks!



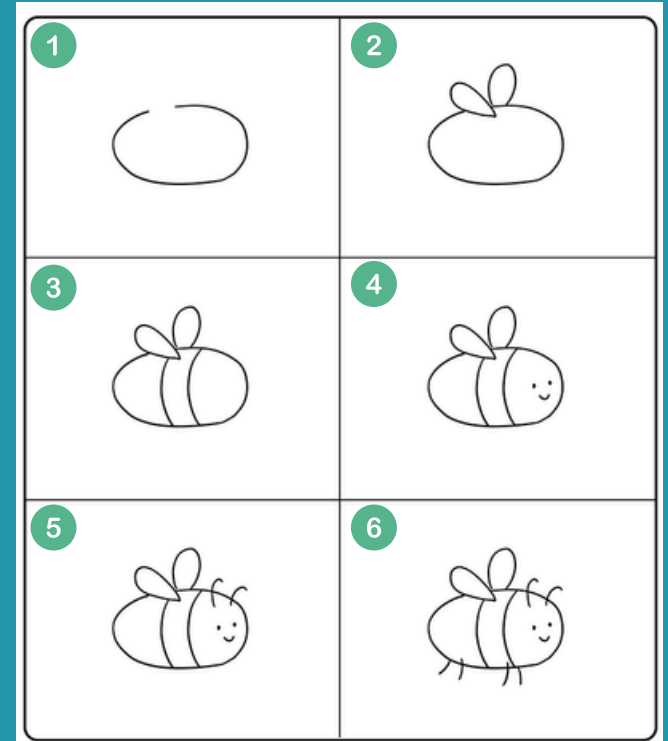
SPOT the difference



There are 6 differences
between these two pictures.
Can you spot them all?

answers can be found on the
drawing page

HOW TO DRAW A BEE



- 1 Draw a squished circle
- 2 Add two ovals for wings
- 3 Draw the stripes
- 4 Add a smiley face
- 5 Draw antenna
- 6 Add on the legs and you're done!



SPOT THE DIFFERENCE 1 Sun is wearing sunglasses. 2 The fish are swimming the other way. 3 The swan has moved forward 4 There are two extra ducklings. 5 There is another dragonfly. 6 The snail has moved to the grass.



WITNEY
TOWN COUNCIL



Find out more about the
lake and country park
by scanning this code
to visit the website.

Send us a lake joke or your
swan picture and tell us your
favourite thing, or least favourite
thing about the lake & country park
email info@witney-tc.gov.uk

